



CALIFORNIA SCAFFOLDING & FORMWORK FACTORY LLC

(Complete Range of Scaffolding & Formwork, System Scaffolds and Suppliers of Couplers, Props, Jacks and Fittings)



(A PART OF PRESTIGIOUS COMMANDER GROUP OF COMPANIES, EST. 1991)



Certified Company

The information contained in this Catalogue is, to the best of our knowledge, true and accurate at the time of publication. Users should be aware, however, that specifications are subject to change With respect to constant technical changes / improvements. The working loads contained were obtained during ideal test conditions; these may vary with mishandling and / or improper erection.



CALIFORNIA SCAFFOLDING & FORMWORK FACTORY LLC

(Complete Range of Scaffolding & Formwork, System Scaffolds and Suppliers of Couplers, Props, Jacks and Fittings)

COMPANY PROFILE

California Scaffolding & Formwork Factory LLC (CSFF) is a part of prestigious Commander Group of Companies. CSFF is an ISO 9001 : 2008, ISO 14001:2004 & OHSAS 18001:2007 certified company by TÜV SÜD Germany, Manufacturing & supply of special formwork & scaffolding systems in the field of construction, while on the technical side our business area is closely linked, on the commercial side they reduce the vulnerability to economic cycle because they depend on different markets. The technological affinities permit economies of scale in the areas of purchasing and production. CSFF is a company with a strong innovation tradition, striving for continual improvement in all areas to reach for a new level of excellence. This means developing new technologies that will open up new opportunities for company, its employees.

The company is working in scaffolding and formwork with employee over 450 qualified engineers and technicians who are fully trained to provide our customers high standards of service and is headed by the undersigned that is highly qualified mechanical engineers with over 25 year's experience in scaffolding & formwork industry. The company's annual turnover is over 65 million Dirhams.



Certified Company



CALIFORNIA SCAFFOLDING & FORMWORK FACTORY LLC

(Complete Range of Scaffolding & Formwork, System Scaffolds and Suppliers of Couplers, Props, Jacks and Fittings)

ABOUT US

California Scaffolding & formwork Factory LLC (CSFF) was established in 2001, is a leading Scaffolding & Formwork Company based in Sharjah – UAE. Over the years the company has grown and diversified to become a renowned and reliable provider of many products and services. Clear vision also helped the company grow vertically, yet remained focused. We assure value for money to our esteemed customer by providing most reliable, excellent services and quality products.

California Scaffolding & Formwork Factory LLC (CSFF) in NIA -19 is occupying an area of 20,000 sq ft.'s and its branch factory in Ras Al Khaimah is having an area of 5 Acres. The success of CSFF is the commitment of our employees and the confidence and trust our customers have in us. CSFF is supplying scaffolding and formwork item in the Gulf region with a network all over the Middle East, Africa, Europe and Canada.

Quality and delivery is prime factor for us. Our motive is to deliver the product as per customer satisfaction. We are capable of developing new products as per customer specification in a short time.



Certified Company



CALIFORNIA SCAFFOLDING & FORMWORK FACTORY LLC

(Complete Range of Scaffolding & Formwork, System Scaffolds and Suppliers of Couplers, Props, Jacks and Fittings)

QUALITY

California Scaffolding & Formwork Factory LLC (CSFF) is committed to furnish HIGH QUALITY PRODUCTS, on time, and at the lowest cost. Attainment of such objectives will lead to, customer satisfaction, enhanced higher / proper performance at the application level, and ongoing improvements in process efficiency. Once an objective is achieved, it should be recognized and reset to stimulate further quality improvement. To reach our objectives, we will have to maintain a constant focus on quality with full dedication, commitment, and teamwork.

Our journey is Total Quality Management – fully satisfying our customers' requirements through a process of continuous improvement. It's critical to understand that Total Quality Management is not a short term program. It's a long term commitment aimed at continuously improving the way we work, providing a safe work environment, managing our business processes, and supplier selection / retention. It is our goal to posture our company for market expansion, thereby providing improved job security and quality of life for all.

To provide our customers with safe, good value, point-to-point services. To effect and to offer a consistent and reliable product and fares appealing to leisure and business markets on a range of European routes. To achieve this we will develop our people and establish lasting relationships with our suppliers.



Certified Company



CALIFORNIA SCAFFOLDING & FORMWORK FACTORY LLC

(Complete Range of Scaffolding & Formwork, System Scaffolds and Suppliers of Couplers, Props, Jacks and Fittings)

We are committed to being very aggressive in our attitude towards quality and customer service, primarily since we want to be ranked as the "BEST" in our business. Quality is not just another goal; it is our basic strategy for survival and future growth.

It must be clearly understood that we'll not allow quality to take second place behind cost or schedule. All employees have the right to question their supervisor's decisions or actions if they feel that quality is being compromised.

COMPANY POLICY

- **Achieve customer satisfaction by meeting the target as per customer requirements and Specification.**
- **Strive for continual improvements in all activities by encouraging total employee involvement (TEI).**
- **Complying with all applicable legal and statutory requirements, including the requirements of clients, stakeholders and interested parties.**
- **Train the employees on various quality improvement tools, including health and safety standards.**
- **Enhance training on health & safety.**
- **Environmental sustainability in order to protect natural resources and prevent pollution.**
- **Achieve organizational excellence.**

COMPANY OBJECTIVE

- **Adhere to delivery schedule.**
- **Meet customers' requirements as per the Contract.**
- **Reduce cost of quality.**
- **Meet all UAE legal and regulatory requirements.**
- **Implement Kaizen throughout the organization.**



Certified Company



CALIFORNIA SCAFFOLDING & FORMWORK FACTORY LLC

(Complete Range of Scaffolding & Formwork, System Scaffolds and Suppliers of Couplers, Props, Jacks and Fittings)

- Implement 5-s throughout the company.
- Introduce quality circle in the company.
- Train employees on health and safety to reduce accidents.
- Reduce loss of man-hours, resulting due to Environment, Occupational health and safety issues in order to prevent any injury or ill-health, LTI (Loss Time Injury).
- Create awareness among the employees on the consumption of natural resources.
- Increase awareness among employees on ecology and take eco-friendly initiatives.
- Improving the effectiveness of the IMS (Integrated Management System).

PHILOSOPHY

Our Goals

- We seek to achieve an ever-increasing cash flow in our companies and an attractive return on our capital.
- We offer our employees the opportunity to earn personal and social esteem in their occupation.
- We aim to be useful partners for society.

Our Methods

- We design our management and company structures to be simple and transparent.
- We align all our activities with strategic goals.
- We strengthen and supplement our successful market positions using innovations which we implement both rapidly and on a global basis.



Certified Company



CALIFORNIA SCAFFOLDING & FORMWORK FACTORY LLC

(Complete Range of Scaffolding & Formwork, System Scaffolds and Suppliers of Couplers, Props, Jacks and Fittings)

FORMWORK

Formwork are key components for the concrete construction industries, which itself forms an important segment of the overall construction market. Concrete construction is used in virtually every sector including transport, utilities and industrial, commercial and residential buildings. It varies from the simple construction of foundations in residential developments to highly complex engineered solutions for major infrastructure projects.

The company has particularly specialized in the following services :-

- ✓ **Fabrication of Scaffolding and Formwork Items such as Walings, G.I. Braces, Prop Jacks, Splice Plates, Frames, Spindle Struts, Steel Moulds, Steel Panel, Column Forms, Telescopic Beams, and any other items as per drawing.**
- ✓ **Fabrication of Horizontal and Vertical Tanks, Pressure Vessels, Silos / Hoppers, Screw Conveyor Systems and Crane Structures.**
- ✓ **Fabrication of Industrial / Warehouse Sheds Walkways, Platforms, Ladders, Grating Work, Handrails, Staircases and Cladding Works.**
- ✓ **Fabrication and maintenance of Crusher's, Conveyor's Roller's Conveyor Drum's, Fabrication of Screen, Belt Conveyor, Chute, Excavator Bucket, Grab Bucket, Hydraulic Jack's and Motor Rewinding.**



Certified Company

The information contained in this Catalogue is, to the best of our knowledge, true and accurate at the time of publication. Users should be aware, however, that specifications are subject to change

With respect to constant technical changes / improvements. The working loads contained were obtained during ideal test conditions; these may vary with mishandling and / or improper erection.



CALIFORNIA SCAFFOLDING & FORMWORK FACTORY LLC

(Complete Range of Scaffolding & Formwork, System Scaffolds and Suppliers of Couplers, Props, Jacks and Fittings)

CUPLOCK SYSTEM COMPONENTS

Standards / Verticals

Verticals are provided in three basic sizes with cup joints welded at 500mm intervals. The captive mobile top cups are malleable castings to withstand rough site handling, and welded bottom cups are pressed from high – quality steel. Integral Spigots, 150mm long, are provided at the top of each Vertical for making Vertical Connections. These Spigots are drilled to receive locking pins, where uplift is a problem

CSFF - STANDARD (CUPLOCK)		
CODE	SIZE (m)	WEIGHT (kg)
STD 30	3.0	16.43
STD 28	2.8	15.65
STD 27	2.7	15.00
STD 25	2.5	13.62
STD 23	2.3	12.93
STD 20	2.0	10.90
STD 18	1.8	10.21
STD 15	1.5	8.18
STD 13	1.3	7.48
STD 10	1.0	5.45
STD 08	0.8	4.50
STD 07	0.7	4.00
STD 05	0.5	3.50

Ledgers / Horizontals

All Horizontals / Ledgers have identical forged blade ends, with the minimum of projection to avoid damage. Each component locates in the cup joint on the Vertical. Ledgers are available in sizes ranging from 0.60M up to 2.50M.

CSFF - LEDGER (CUPLOCK)		
CODE	SIZE (m)	WEIGHT (kg)
LGR 25	2.5	8.44
LGR 18	1.8	6.15
LGR 16	1.6	5.52
LGR 13	1.3	4.55
LGR 12	1.2	4.22
LGR 10	1.0	3.57
LGR 09	0.9	3.25
LGR 06	0.6	2.28



CUPLOCK System Standard



Bottom Cup



Drop Forged Top Cup



Stopper Pin



CUPLOCK System Ledger



Drop Forged Ledger End



Certified Company



CALIFORNIA SCAFFOLDING & FORMWORK FACTORY LLC

(Complete Range of Scaffolding & Formwork, System Scaffolds and Suppliers of Couplers, Props, Jacks and Fittings)

TELESCOPIC PROPS

TECHNICAL SPECIFICATIONS - FACTOR OF SAFETY: 2.0

LIGHT DUTY PROPS

CODE	SCREW (Threaded Tube) (L/O. D/t) (mm)	OUTER TUBE (L/O. D/t) (mm)	INNER TUBE (L/O. D/t) (mm)	HEIGHT OF USE (mm)		PERMISSIBLE LOAD (kg)		WEIGHT (Approx.) (kg)
				Min.	Max.	Closed	Extended	
LDP01	245 / 60.3 / 3.6	1500 / 60.3 / 2.1	1500 / 48.3 / 2.1	1750	3000	1500	1100	10.6
LDP02	245 / 60.3 / 3.6	1500 / 60.3 / 2.1	2000 / 48.3 / 2.1	2000	3500	1400	950	11.8
LDP03	245 / 60.3 / 3.6	2000 / 60.3 / 2.1	2000 / 48.3 / 2.1	2500	4000	1100	800	12.9
LDP04	245 / 60.3 / 3.6	2500 / 60.3 / 2.1	2500 / 48.3 / 2.1	3000	5000	930	720	15.0

MEDIUM DUTY PROPS

CODE	SCREW (Threaded Tube) (L/O. D/t) (mm)	OUTER TUBE (L/O. D/t) (mm)	INNER TUBE (L/O. D/t) (mm)	HEIGHT OF USE (mm)		PERMISSIBLE LOAD (kg)		WEIGHT (Approx.) (kg)
				Min.	Max.	Closed	Extended	
MDP01	245 / 60.3 / 3.6	1500 / 60.3 / 2.1	1500 / 48.3 / 3.2	1750	3000	3500	3000	14.6
MDP02	245 / 60.3 / 3.6	1500 / 60.3 / 2.1	2000 / 48.3 / 3.2	2000	3500	2000	1600	16.4
MDP03	245 / 60.3 / 3.6	2000 / 60.3 / 2.1	2000 / 48.3 / 3.2	2500	4000	1700	1300	18.1
MDP04	245 / 60.3 / 3.6	2000 / 60.3 / 2.1	2500 / 48.3 / 3.2	3000	4500	1450	1050	20.0
MDP05	245 / 60.3 / 3.6	2500 / 60.3 / 2.1	3000 / 48.3 / 3.2	3000	5000	1250	950	22.4

HEAVY DUTY PROPS

CODE	Description	OUTER TUBE (L/O. D/t) (mm)	INNER TUBE (L/O. D/t) (mm)	HEIGHT OF USE (mm)		PERMISSIBLE LOAD (kg)		WEIGHT (Approx.) (kg)
				Min.	Max.	Closed	Extended	
HDP00	B.S. Prop No. 0	1000 / 60.3 / 3.6	1020 / 48.3 / 3.2	1070	1820	4300	2200	11
HDP01	B.S. Prop No. 1	1690 / 60.3 / 3.6	1742 / 48.3 / 3.2	1750	3120	3750	1900	16.7
HDP02	B.S. Prop No. 2	1820 / 60.3 / 3.6	1890 / 48.3 / 3.2	1980	3350	3500	1650	18.4
HDP03	B.S. Prop No. 3	2090 / 60.3 / 3.6	2166 / 48.3 / 3.2	2590	3950	2750	850	20.2
HDP04	B.S. Prop No. 4	2500 / 3.6 / 60.3	2650 / 48.3 / 3.2	3200	4870	2500	750	24.2



Certified Company

The information contained in this Catalogue is, to the best of our knowledge, true and accurate at the time of publication. Users should be aware, however, that specifications are subject to change With respect to constant technical changes / improvements. The working loads contained were obtained during ideal test conditions; these may vary with mishandling and / or improper erection.



CALIFORNIA SCAFFOLDING & FORMWORK FACTORY LLC

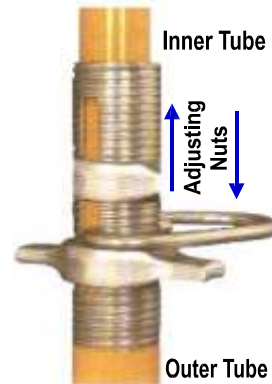
(Complete Range of Scaffolding & Formwork, System Scaffolds and Suppliers of Couplers, Props, Jacks and Fittings)

PUSH – PULL PROPS

Single Push – Pull Props

For use whenever an adjustable inclined strut is required,
Suitable for all building systems and formwork applications.

Single P/P Props
Rocking Base



Light Duty Push Pull Props

CODE	SCREW (Threaded Tube) L/O. D/t (mm)	OUTER TUBE L/O. D/t (mm)	INNER TUBE L/O. D/t (mm)	HEIGHT OF USE (mm)		PERMISSIBLE LOAD (kg)	
				Min.	Max.	Closed	Extended
LDPP 01	245 / 60.3 / 3.6	1500 / 60.3 / 2.1	1500 / 48.3 / 2.1	1750	3000	1500	1100
LDPP 02	245 / 60.3 / 3.6	1500 / 60.3 / 2.1	2000 / 48.3 / 2.1	2000	3500	1400	950
LDPP 03	245 / 60.3 / 3.6	1500 / 60.3 / 2.1	2500 / 48.3 / 2.1	2500	4000	1100	800
LDPP 04	245 / 60.3 / 3.6	2000 / 60.3 / 2.1	3000 / 48.3 / 2.1	3000	5000	930	720

Note: 1) L = Length of the Element 2) O.D. = Outer Diameter 3) t = Pipe Thickness

Heavy Duty Push Pull Props

CODE	SCREW (Threaded Tube) L/O. D/t (mm)	OUTER TUBE L/O. D/t (mm)	INNER TUBE L/O. D/t (mm)	HEIGHT OF USE (mm)		PERMISSIBLE LOAD (kg)	
				Min.	Max.	Closed	Extended
HDPP 01	245 / 60.3 / 3.6	1500 / 60.3 / 2.1	1500 / 48.3 / 3.2	1750	3000	3724	3200
HDPP 02	245 / 60.3 / 3.6	1500 / 60.3 / 2.1	2000 / 48.3 / 3.2	2000	3500	2200	1800
HDPP 03	245 / 60.3 / 3.6	1500 / 60.3 / 2.1	2500 / 48.3 / 3.2	2500	4000	1900	1500
HDPP 04	245 / 60.3 / 3.6	1500 / 60.3 / 2.1	3000 / 48.3 / 3.2	3000	4500	1630	1180
HDPP 05	245 / 60.3 / 3.6	2000 / 60.3 / 2.1	3000 / 48.3 / 3.2	3000	5000	1465	1100

Note: 1) L = Length of the Element 2) O.D. = Outer Diameter 3) t = Pipe Thickness



Certified Company

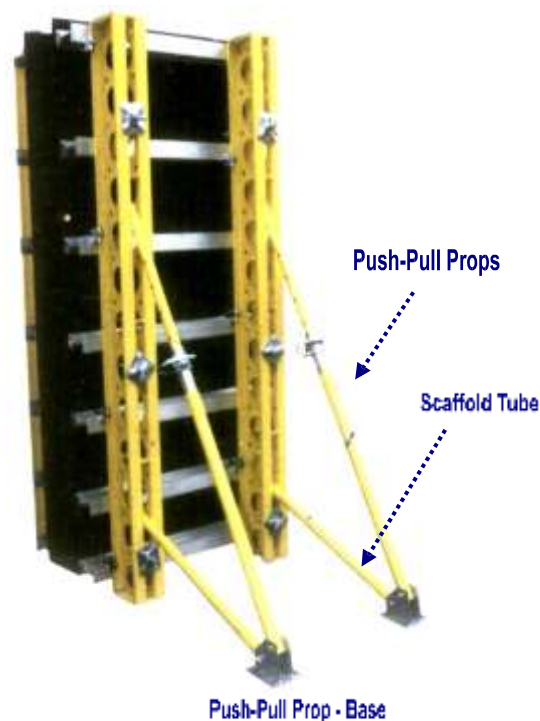
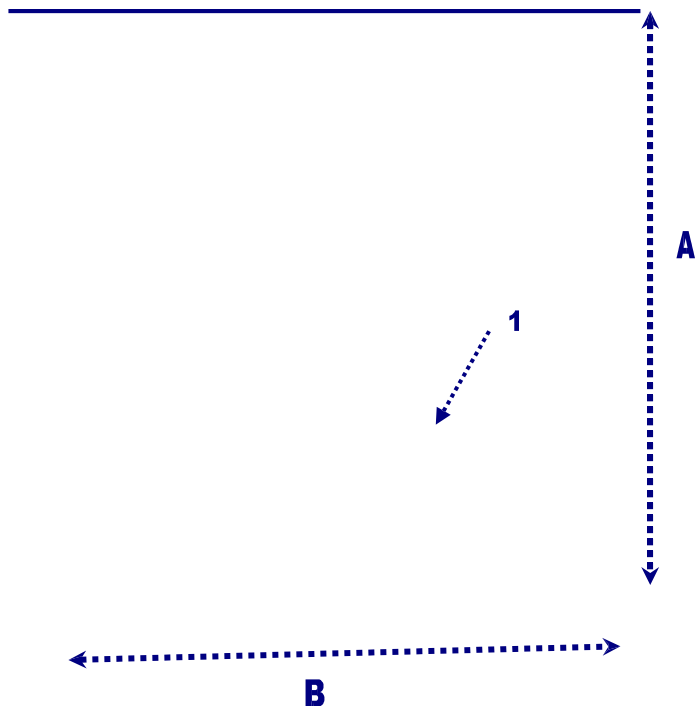


CALIFORNIA SCAFFOLDING & FORMWORK FACTORY LLC

(Complete Range of Scaffolding & Formwork, System Scaffolds and Suppliers of Couplers, Props, Jacks and Fittings)

Double Push – Pull Props

The main advantage of using double P/P Props over single P/P Props is that a more precise vertical alignment can be achieved. Another advantage, double P/P Props provide stronger support where it is needed for higher safety as in the case of outside wall shuttering.



Heavy Duty Double Push Pull Props

CODE	1	2 (D/t (mm))	A (mm)		B (mm)
			Min.	Max.	
DPP3.0M	LDPP 01	48.3 / 3.2 Tube	1500	2700	1300
DPP3.5M	LDPP 02	48.3 / 3.2 Tube	2100	2250	1300
DPP4.0M	LDPP 03	48.3 / 3.2 Tube	2700	3750	1300
DPP4.5M	LDPP 04	48.3 / 3.2 Tube	2850	4000	2000
DPP5.0M	LDPP 05	48.3 / 3.2 Tube	2850	4550	2000

Note: 1) D = Diameter 2) t = Wall Thickness

Double P/P
Prop Base



Certified Company



CALIFORNIA SCAFFOLDING & FORMWORK FACTORY LLC

(Complete Range of Scaffolding & Formwork, System Scaffolds and Suppliers of Couplers, Props, Jacks and Fittings)

MODULAR SCAFFOLD (AUXILIARY PARTS)

Base Elements: Base / Universal

Jacks This well-proven prop-type Base Jacks is an alternative base component and provides a full 500mm of coarse and fine adjustment, thereby covering the entire range between cup joints on the Verticals.

ADJUSTABLE BASE JACKS			
CODE	SIZE	CROSS SECTION	WEIGHT (kg)
BJH	0.75m	HOLLOW	4.5
BJS	0.75m	SOLID	6.9



Base Jack
(38 mm)

Base / Head Plate

The base and Head Plate is used in conjunction with the Universal Jack and is drilled to allow for the insertion of a securing bolt if required.

PLANE BASE		
CODE	DIMENSIONS	WEIGHT (kg)
BP 12	12cmx12cm x 6mm	0.78
BP 15	15cmx15cmx6mm	0.90



Base Plate

Rocking Base Plate

This component is used either as a base plate at the bottom of a standard to give the necessary spread of load, or when the jack is used at the top of the standard as a rocking plate, to accept a drop head in a slanting position.

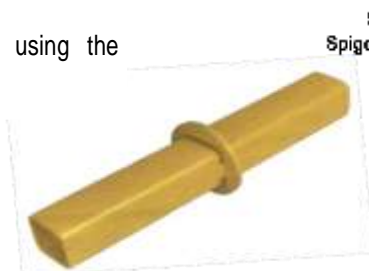
ROCKING BASE PLATE			
CODE	SIZE	CROSS SECTION	WEIGHT (kg)
BR15	16	15cm x 15cm x 6mm	0.95



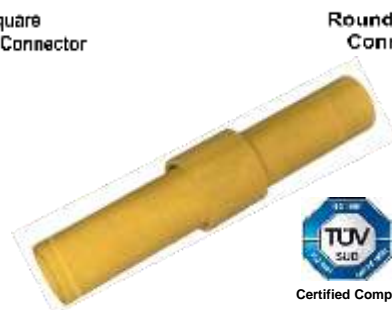
Rocking
Base Plate

Connection Elements

Open-ended standards are joined together using the Spigot Connectors and Box Wedge.



Square
Spigot Connector



Round Spigot
Connector



Certified Company



CALIFORNIA SCAFFOLDING & FORMWORK FACTORY LLC

(Complete Range of Scaffolding & Formwork, System Scaffolds and Suppliers of Couplers, Props, Jacks and Fittings)

ACCESS SYSTEMS – TUBES AND FITTINGS PRODUCTS

SHEET METALS PRODUCTS



Pressed Swivel Coupler (M.D.)

Used to connect two scaffolding tubes at any angle. These are key components in the structure and must be load bearing. The body is firmly riveted to permit rotation but still ensures the minimum of further movement for maximum rigidity.



Pressed Double Coupler (M.D.)

Used to connect two scaffolding tubes at right angles. These are critical components in the scaffolding structure and must be load bearing to resist both slip and distortion.



Pressed Sleeve Coupler

Used to join two scaffolding tubes externally end to end. A steel divider located centrally ensures equal insertion of each tube. They can be employed where tension joints are required.



Joint Pin

Used to connect two scaffolding tubes end to end. Fitted internally it expands to apply maximum grip against the wall of the tube. Not suitable for joints where tension can be developed in the tube.



Patent Clamp

This is highly economical fitting for fastening scaffolding tubes to girders with a single bolt. Suitable for loads at right angles to flanges only. Must be used in pairs.



Certified Company



CALIFORNIA SCAFFOLDING & FORMWORK FACTORY LLC

(Complete Range of Scaffolding & Formwork, System Scaffolds and Suppliers of Couplers, Props, Jacks and Fittings)

DROP FORGED PRODUCTS



Drop Forged Swivel Coupler (H.D.)

A one-piece load bearing coupler of rugged design incorporating captive T bolts for connecting two scaffold tubes at any angle.



Drop Forged Double Coupler (H.D.)

A one-piece load bearing coupler-incorporating captive T bolts used to connecting two scaffold tubes at right angle



Drop Forged Putlog Coupler

A one-piece coupler for connecting transoms and putlog to ledgers.



Drop Forged BRC Coupler



Gravlock Coupler

There are often requirements to fasten scaffolding tubes to girder and other steel sections and it demands a specialized fitting with a high degree of versatility. The Gravlock Coupler has been specifically designed for attachment to either horizontal or vertical Flanges. In erection the Gravlock Coupler is highly effective as it enables the fitting to be bolted to the girder first. This leaves both hands free to present and secure the tube. As the tube is not compressed against the girder it is not distorted by the fastening process. Gravlock Coupler must be used in pair.



Scaffold Wheel (H.D.) 8"

Working Load 2.5kN



Certified Company



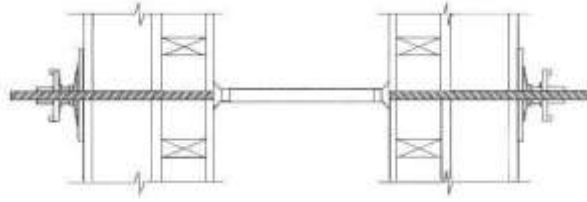
CALIFORNIA SCAFFOLDING & FORMWORK FACTORY LLC

(Complete Range of Scaffolding & Formwork, System Scaffolds and Suppliers of Couplers, Props, Jacks and Fittings)

WALLFORM ACCESSORIES (COMPONENTS)

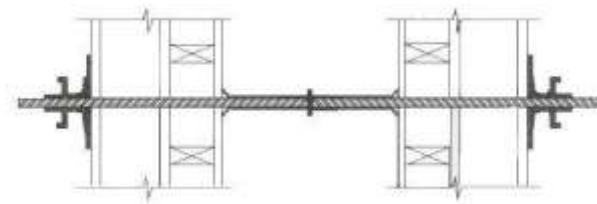
TIE ROD

High-tensile Tie Rod with fast action thread along its full length having a maximum overall diameter of 15.5mm. Available in 6.0m standard lengths. CG Heavy – Duty Ties may be used to a maximum S.W.L. of 90 kN.



THRUST PLATE TIE NUT

Used with Soldiers and Strong backs in conjunction with Thrust Plate. Also used for timber formwork.



Dimensions:

30mm across flats, 55mm overall length.

WATER STOP

Used for Watertight Concrete wall on structures. Generally required for reservoirs. See above details for connection.



Certified Company



CALIFORNIA SCAFFOLDING & FORMWORK FACTORY LLC

(Complete Range of Scaffolding & Formwork, System Scaffolds and Suppliers of Couplers, Props, Jacks and Fittings)

THRUST PLATES

Used in conjunction with the Thrust Plate Tie Nut for use with Timber Bearers. Thrust Plates are available in two sizes to suit different loadings.

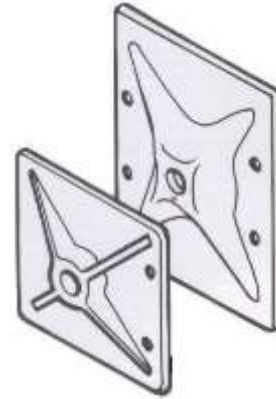
Size

120mm x 120mm

150mm x 200 mm

Weight 0.8 kg 1.8 kg

Safe Load 60kN 70 kN



JOINT NUT

Used to join 2 lengths of Tie Rod. A pin is welded through the center of the Nut to ensure that each Tie Rod is driven to the mid-point.



PLASTIC SLEEVING

Used to prevent contact between the concrete and the Tie Rod thus facilitating recovery of the Tie. The Sleeving is fitted between the form faces.

SLEEVING CONE

Used to seal Plastic Sleeving to form face. When formwork is struck. Tie Rod end Sleeving Cones are removed and the hole in the concrete made good.



Certified Company



CALIFORNIA SCAFFOLDING & FORMWORK FACTORY LLC

Complete Range of Scaffolding & Formwork, System Scaffolds and Suppliers of Couplers, Props, Jacks and Fittings)

ALUMINUM SCAFFOLDING

BS – STANDARD - 2037



Aluminium Scaffolding (Wide) 1.35m Width X 2.5m Length

		2.0m	3.0m	4.0m	5.0m	6.0m	7.0m	8.0m	9.0m	10m	11.0m	12.0m	13.0m	14.0m	15.0m	16.0m
Tower Height		2.0m	3.0m	4.0m	5.0m	6.0m	7.0m	8.0m	9.0m	10m	11.0m	12.0m	13.0m	14.0m	15.0m	16.0m
Platform Height		1.5m	2.0m	3.0m	4.0m	5.0m	6.0m	7.0m	8.0m	9.0m	10m	11.0m	12.0m	13.0m	14.0m	15.0m
Working Height		3.5m	4.0m	5.0m	6.0m	7.0m	8.0m	9.0m	10m	11.0m	12.0m	13.0m	14.0m	15.0m	16.0m	17.0m
Accessories																
Ladder Frame	2000 mm	1	1	2	2	3	3	4	4	5	5	6	6	7	7	8
Span (4 rung Normal Frame)	2000 mm	1	1	2	2	3	3	4	4	5	5	6	6	7	7	8
Guard Rail Frame	1000 mm	0	1	0	1	0	1	0	1	0	1	0	1	0	1	0
Horizontal Brace	2500 mm	4	4	6	6	8	8	10	10	12	12	14	14	16	16	18
Diagonal Brace	2700 mm	4	4	8	8	12	12	16	16	20	20	24	24	28	28	32
Stabilizer	3000 mm	0	0	0	4	4	4	0	0	0	0	0	0	0	0	0
Stabilizer	4500 mm	0	0	0	0	0	0	4	4	4	4	0	0	0	0	0
Stabilizer	6000 mm	0	0	0	0	0	0	0	0	0	0	4	4	4	4	4
Castor Wheel -6"		4	4	0	0	0	0	0	0	0	0	0	0	0	0	0
Castor Wheel -8"		0	0	4	4	4	4	4	4	4	4	4	4	4	4	4
Adjustable Leg		0	0	4	4	4	4	4	4	4	4	4	4	4	4	4
Platform		2	2	2	2	2	2	2	2	2	2	2	2	2	2	2



Certified Company

The information contained in this Catalogue is, to the best of our knowledge, true and accurate at the time of publication. Users should be aware, however, that specifications are subject to change With respect to constant technical changes / improvements. The working loads contained were obtained during ideal test conditions; these may vary with mishandling and / or improper erection.



CALIFORNIA SCAFFOLDING & FORMWORK FACTORY LLC

(Complete Range of Scaffolding & Formwork, System Scaffolds and Suppliers of Couplers, Props, Jacks and Fittings)

FORMWORK FABRICATION



Certified Company

The information contained in this Catalogue is, to the best of our knowledge, true and accurate at the time of publication. Users should be aware, however, that specifications are subject to change With respect to constant technical changes / improvements. The working loads contained were obtained during ideal test conditions; these may vary with mishandling and / or improper erection.



CALIFORNIA SCAFFOLDING & FORMWORK FACTORY LLC

(Complete Range of Scaffolding & Formwork, System Scaffolds and Suppliers of Couplers, Props, Jacks and Fittings)

FORMWORK FABRICATION



Certified Company

The information contained in this Catalogue is, to the best of our knowledge, true and accurate at the time of publication. Users should be aware, however, that specifications are subject to change With respect to constant technical changes / improvements. The working loads contained were obtained during ideal test conditions; these may vary with mishandling and / or improper erection.



CALIFORNIA SCAFFOLDING & FORMWORK FACTORY LLC

(Complete Range of Scaffolding & Formwork, System Scaffolds and Suppliers of Couplers, Props, Jacks and Fittings)

FORMWORK FABRICATION



Certified Company

The information contained in this Catalogue is, to the best of our knowledge, true and accurate at the time of publication. Users should be aware, however, that specifications are subject to change With respect to constant technical changes / improvements. The working loads contained were obtained during ideal test conditions; these may vary with mishandling and / or improper erection.



CALIFORNIA SCAFFOLDING & FORMWORK FACTORY LLC

(Complete Range of Scaffolding & Formwork, System Scaffolds and Suppliers of Couplers, Props, Jacks and Fittings)

FORMWORK FABRICATION



Certified Company

The information contained in this Catalogue is, to the best of our knowledge, true and accurate at the time of publication. Users should be aware, however, that specifications are subject to change With respect to constant technical changes / improvements. The working loads contained were obtained during ideal test conditions; these may vary with mishandling and / or improper erection.



CALIFORNIA SCAFFOLDING & FORMWORK FACTORY LLC

(Complete Range of Scaffolding & Formwork, System Scaffolds and Suppliers of Couplers, Props, Jacks and Fittings)

FORMWORK FABRICATION



Certified Company

The information contained in this Catalogue is, to the best of our knowledge, true and accurate at the time of publication. Users should be aware, however, that specifications are subject to change With respect to constant technical changes / improvements. The working loads contained were obtained during ideal test conditions; these may vary with mishandling and / or improper erection.



CALIFORNIA SCAFFOLDING & FORMWORK FACTORY LLC

(Complete Range of Scaffolding & Formwork, System Scaffolds and Suppliers of Couplers, Props, Jacks and Fittings)

FORMWORK FABRICATION



Certified Company

The information contained in this Catalogue is, to the best of our knowledge, true and accurate at the time of publication. Users should be aware, however, that specifications are subject to change With respect to constant technical changes / improvements. The working loads contained were obtained during ideal test conditions; these may vary with mishandling and / or improper erection.



CALIFORNIA SCAFFOLDING & FORMWORK FACTORY LLC

(Complete Range of Scaffolding & Formwork, System Scaffolds and Suppliers of Couplers, Props, Jacks and Fittings)

FORMWORK FABRICATION



Certified Company

The information contained in this Catalogue is, to the best of our knowledge, true and accurate at the time of publication. Users should be aware, however, that specifications are subject to change With respect to constant technical changes / improvements. The working loads contained were obtained during ideal test conditions; these may vary with mishandling and / or improper erection.



CALIFORNIA SCAFFOLDING & FORMWORK FACTORY LLC

(Complete Range of Scaffolding & Formwork, System Scaffolds and Suppliers of Couplers, Props, Jacks and Fittings)

FORMWORK FABRICATION



Certified Company

The information contained in this Catalogue is, to the best of our knowledge, true and accurate at the time of publication. Users should be aware, however, that specifications are subject to change With respect to constant technical changes / improvements. The working loads contained were obtained during ideal test conditions; these may vary with mishandling and / or improper erection.



CALIFORNIA SCAFFOLDING & FORMWORK FACTORY LLC

(Complete Range of Scaffolding & Formwork, System Scaffolds and Suppliers of Couplers, Props, Jacks and Fittings)

FORMWORK FABRICATION



Certified Company

The information contained in this Catalogue is, to the best of our knowledge, true and accurate at the time of publication. Users should be aware, however, that specifications are subject to change With respect to constant technical changes / improvements. The working loads contained were obtained during ideal test conditions; these may vary with mishandling and / or improper erection.



CALIFORNIA SCAFFOLDING & FORMWORK FACTORY LLC

(Complete Range of Scaffolding & Formwork, System Scaffolds and Suppliers of Couplers, Props, Jacks and Fittings)

FORMWORK FABRICATION



Certified Company

The information contained in this Catalogue is, to the best of our knowledge, true and accurate at the time of publication. Users should be aware, however, that specifications are subject to change With respect to constant technical changes / improvements. The working loads contained were obtained during ideal test conditions; these may vary with mishandling and / or improper erection.



CALIFORNIA SCAFFOLDING & FORMWORK FACTORY LLC

(Complete Range of Scaffolding & Formwork, System Scaffolds and Suppliers of Couplers, Props, Jacks and Fittings)

FORMWORK FABRICATION



Certified Company

The information contained in this Catalogue is, to the best of our knowledge, true and accurate at the time of publication. Users should be aware, however, that specifications are subject to change With respect to constant technical changes / improvements. The working loads contained were obtained during ideal test conditions; these may vary with mishandling and / or improper erection.



CALIFORNIA SCAFFOLDING & FORMWORK FACTORY LLC

(Complete Range of Scaffolding & Formwork, System Scaffolds and Suppliers of Couplers, Props, Jacks and Fittings)

FORMWORK FABRICATION



Certified Company

The information contained in this Catalogue is, to the best of our knowledge, true and accurate at the time of publication. Users should be aware, however, that specifications are subject to change With respect to constant technical changes / improvements. The working loads contained were obtained during ideal test conditions; these may vary with mishandling and / or improper erection.



CALIFORNIA SCAFFOLDING & FORMWORK FACTORY LLC

(Complete Range of Scaffolding & Formwork, System Scaffolds and Suppliers of Couplers, Props, Jacks and Fittings)

FORMWORK FABRICATION



Certified Company

The information contained in this Catalogue is, to the best of our knowledge, true and accurate at the time of publication. Users should be aware, however, that specifications are subject to change. With respect to constant technical changes / improvements. The working loads contained were obtained during ideal test conditions; these may vary with mishandling and / or improper erection.



CALIFORNIA SCAFFOLDING & FORMWORK FACTORY LLC

(Complete Range of Scaffolding & Formwork, System Scaffolds and Suppliers of Couplers, Props, Jacks and Fittings)

FORMWORK FABRICATION



Certified Company

The information contained in this Catalogue is, to the best of our knowledge, true and accurate at the time of publication. Users should be aware, however, that specifications are subject to change With respect to constant technical changes / improvements. The working loads contained were obtained during ideal test conditions; these may vary with mishandling and / or improper erection.



CALIFORNIA SCAFFOLDING & FORMWORK FACTORY LLC

(Complete Range of Scaffolding & Formwork, System Scaffolds and Suppliers of Couplers, Props, Jacks and Fittings)

FORMWORK FABRICATION



Certified Company

The information contained in this Catalogue is, to the best of our knowledge, true and accurate at the time of publication. Users should be aware, however, that specifications are subject to change With respect to constant technical changes / improvements. The working loads contained were obtained during ideal test conditions; these may vary with mishandling and / or improper erection.



CALIFORNIA SCAFFOLDING & FORMWORK FACTORY LLC

(Complete Range of Scaffolding & Formwork, System Scaffolds and Suppliers of Couplers, Props, Jacks and Fittings)

FORMWORK FABRICATION



Certified Company

The information contained in this Catalogue is, to the best of our knowledge, true and accurate at the time of publication. Users should be aware, however, that specifications are subject to change With respect to constant technical changes / improvements. The working loads contained were obtained during ideal test conditions; these may vary with mishandling and / or improper erection.



CALIFORNIA SCAFFOLDING & FORMWORK FACTORY LLC

(Complete Range of Scaffolding & Formwork, System Scaffolds and Suppliers of Couplers, Props, Jacks and Fittings)

FORMWORK FABRICATION



Certified Company

The information contained in this Catalogue is, to the best of our knowledge, true and accurate at the time of publication. Users should be aware, however, that specifications are subject to change With respect to constant technical changes / improvements. The working loads contained were obtained during ideal test conditions; these may vary with mishandling and / or improper erection.



CALIFORNIA SCAFFOLDING & FORMWORK FACTORY LLC

(Complete Range of Scaffolding & Formwork, System Scaffolds and Suppliers of Couplers, Props, Jacks and Fittings)

FORMWORK FABRICATION



Certified Company

The information contained in this Catalogue is, to the best of our knowledge, true and accurate at the time of publication. Users should be aware, however, that specifications are subject to change With respect to constant technical changes / improvements. The working loads contained were obtained during ideal test conditions; these may vary with mishandling and / or improper erection.



CALIFORNIA SCAFFOLDING & FORMWORK FACTORY LLC

(Complete Range of Scaffolding & Formwork, System Scaffolds and Suppliers of Couplers, Props, Jacks and Fittings)

FORMWORK FABRICATION



Certified Company

The information contained in this Catalogue is, to the best of our knowledge, true and accurate at the time of publication. Users should be aware, however, that specifications are subject to change With respect to constant technical changes / improvements. The working loads contained were obtained during ideal test conditions; these may vary with mishandling and / or improper erection.



CALIFORNIA SCAFFOLDING & FORMWORK FACTORY LLC

(Complete Range of Scaffolding & Formwork, System Scaffolds and Suppliers of Couplers, Props, Jacks and Fittings)

MACHINING WORK



Certified Company

The information contained in this Catalogue is, to the best of our knowledge, true and accurate at the time of publication. Users should be aware, however, that specifications are subject to change With respect to constant technical changes / improvements. The working loads contained were obtained during ideal test conditions; these may vary with mishandling and / or improper erection.



CALIFORNIA SCAFFOLDING & FORMWORK FACTORY LLC

(Complete Range of Scaffolding & Formwork, System Scaffolds and Suppliers of Couplers, Props, Jacks and Fittings)

MACHINING WORK



Certified Company

The information contained in this Catalogue is, to the best of our knowledge, true and accurate at the time of publication. Users should be aware, however, that specifications are subject to change With respect to constant technical changes / improvements. The working loads contained were obtained during ideal test conditions; these may vary with mishandling and / or improper erection.



CALIFORNIA SCAFFOLDING & FORMWORK FACTORY LLC

(Complete Range of Scaffolding & Formwork, System Scaffolds and Suppliers of Couplers, Props, Jacks and Fittings)

MACHINING WORK



Certified Company

The information contained in this Catalogue is, to the best of our knowledge, true and accurate at the time of publication. Users should be aware, however, that specifications are subject to change With respect to constant technical changes / improvements. The working loads contained were obtained during ideal test conditions; these may vary with mishandling and / or improper erection.



CALIFORNIA SCAFFOLDING & FORMWORK FACTORY LLC

(Complete Range of Scaffolding & Formwork, System Scaffolds and Suppliers of Couplers, Props, Jacks and Fittings)

FORMWORK FABRICATION



Certified Company

The information contained in this Catalogue is, to the best of our knowledge, true and accurate at the time of publication. Users should be aware, however, that specifications are subject to change With respect to constant technical changes / improvements. The working loads contained were obtained during ideal test conditions; these may vary with mishandling and / or improper erection.



CALIFORNIA SCAFFOLDING & FORMWORK FACTORY LLC

(Complete Range of Scaffolding & Formwork, System Scaffolds and Suppliers of Couplers, Props, Jacks and Fittings)

FORMWORK FABRICATION



Certified Company

The information contained in this Catalogue is, to the best of our knowledge, true and accurate at the time of publication. Users should be aware, however, that specifications are subject to change With respect to constant technical changes / improvements. The working loads contained were obtained during ideal test conditions; these may vary with mishandling and / or improper erection.



CALIFORNIA SCAFFOLDING & FORMWORK FACTORY LLC

(Complete Range of Scaffolding & Formwork, System Scaffolds and Suppliers of Couplers, Props, Jacks and Fittings)

FORMWORK FABRICATION



Certified Company

The information contained in this Catalogue is, to the best of our knowledge, true and accurate at the time of publication. Users should be aware, however, that specifications are subject to change With respect to constant technical changes / improvements. The working loads contained were obtained during ideal test conditions; these may vary with mishandling and / or improper erection.



CALIFORNIA SCAFFOLDING & FORMWORK FACTORY LLC

(Complete Range of Scaffolding & Formwork, System Scaffolds and Suppliers of Couplers, Props, Jacks and Fittings)

FORMWORK FABRICATION



Certified Company

The information contained in this Catalogue is, to the best of our knowledge, true and accurate at the time of publication. Users should be aware, however, that specifications are subject to change With respect to constant technical changes / improvements. The working loads contained were obtained during ideal test conditions; these may vary with mishandling and / or improper erection.



CALIFORNIA SCAFFOLDING & FORMWORK FACTORY LLC

(Complete Range of Scaffolding & Formwork, System Scaffolds and Suppliers of Couplers, Props, Jacks and Fittings)

FORMWORK FABRICATION



Certified Company

The information contained in this Catalogue is, to the best of our knowledge, true and accurate at the time of publication. Users should be aware, however, that specifications are subject to change With respect to constant technical changes / improvements. The working loads contained were obtained during ideal test conditions; these may vary with mishandling and / or improper erection.



CALIFORNIA SCAFFOLDING & FORMWORK FACTORY LLC

(Complete Range of Scaffolding & Formwork, System Scaffolds and Suppliers of Couplers, Props, Jacks and Fittings)

FORMWORK FABRICATION



Certified Company

The information contained in this Catalogue is, to the best of our knowledge, true and accurate at the time of publication. Users should be aware, however, that specifications are subject to change With respect to constant technical changes / improvements. The working loads contained were obtained during ideal test conditions; these may vary with mishandling and / or improper erection.



CALIFORNIA SCAFFOLDING & FORMWORK FACTORY LLC

(Complete Range of Scaffolding & Formwork, System Scaffolds and Suppliers of Couplers, Props, Jacks and Fittings)

FORMWORK FABRICATION



Certified Company

The information contained in this Catalogue is, to the best of our knowledge, true and accurate at the time of publication. Users should be aware, however, that specifications are subject to change With respect to constant technical changes / improvements. The working loads contained were obtained during ideal test conditions; these may vary with mishandling and / or improper erection.



CALIFORNIA SCAFFOLDING & FORMWORK FACTORY LLC

(Complete Range of Scaffolding & Formwork, System Scaffolds and Suppliers of Couplers, Props, Jacks and Fittings)

FORMWORK FABRICATION



Certified Company

The information contained in this Catalogue is, to the best of our knowledge, true and accurate at the time of publication. Users should be aware, however, that specifications are subject to change With respect to constant technical changes / improvements. The working loads contained were obtained during ideal test conditions; these may vary with mishandling and / or improper erection.



CALIFORNIA SCAFFOLDING & FORMWORK FACTORY LLC

(Complete Range of Scaffolding & Formwork, System Scaffolds and Suppliers of Couplers, Props, Jacks and Fittings)

FORMWORK FABRICATION



Certified Company

The information contained in this Catalogue is, to the best of our knowledge, true and accurate at the time of publication. Users should be aware, however, that specifications are subject to change With respect to constant technical changes / improvements. The working loads contained were obtained during ideal test conditions; these may vary with mishandling and / or improper erection.



CALIFORNIA SCAFFOLDING & FORMWORK FACTORY LLC

(Complete Range of Scaffolding & Formwork, System Scaffolds and Suppliers of Couplers, Props, Jacks and Fittings)

FORMWORK FABRICATION



Certified Company

The information contained in this Catalogue is, to the best of our knowledge, true and accurate at the time of publication. Users should be aware, however, that specifications are subject to change With respect to constant technical changes / improvements. The working loads contained were obtained during ideal test conditions; these may vary with mishandling and / or improper erection.



CALIFORNIA SCAFFOLDING & FORMWORK FACTORY LLC

(Complete Range of Scaffolding & Formwork, System Scaffolds and Suppliers of Couplers, Props, Jacks and Fittings)

SCAFFOLDING FABRICATION



Certified Company

The information contained in this Catalogue is, to the best of our knowledge, true and accurate at the time of publication. Users should be aware, however, that specifications are subject to change With respect to constant technical changes / improvements. The working loads contained were obtained during ideal test conditions; these may vary with mishandling and / or improper erection.



CALIFORNIA SCAFFOLDING & FORMWORK FACTORY LLC

(Complete Range of Scaffolding & Formwork, System Scaffolds and Suppliers of Couplers, Props, Jacks and Fittings)

SCAFFOLDING FABRICATION



Certified Company

The information contained in this Catalogue is, to the best of our knowledge, true and accurate at the time of publication. Users should be aware, however, that specifications are subject to change With respect to constant technical changes / improvements. The working loads contained were obtained during ideal test conditions; these may vary with mishandling and / or improper erection.



CALIFORNIA SCAFFOLDING & FORMWORK FACTORY LLC

(Complete Range of Scaffolding & Formwork, System Scaffolds and Suppliers of Couplers, Props, Jacks and Fittings)

SCAFFOLDING FABRICATION



Certified Company

The information contained in this Catalogue is, to the best of our knowledge, true and accurate at the time of publication. Users should be aware, however, that specifications are subject to change With respect to constant technical changes / improvements. The working loads contained were obtained during ideal test conditions; these may vary with mishandling and / or improper erection.



CALIFORNIA SCAFFOLDING & FORMWORK FACTORY LLC

(Complete Range of Scaffolding & Formwork, System Scaffolds and Suppliers of Couplers, Props, Jacks and Fittings)

FORMWORK FABRICATION



Certified Company

The information contained in this Catalogue is, to the best of our knowledge, true and accurate at the time of publication. Users should be aware, however, that specifications are subject to change With respect to constant technical changes / improvements. The working loads contained were obtained during ideal test conditions; these may vary with mishandling and / or improper erection.



CALIFORNIA SCAFFOLDING & FORMWORK FACTORY LLC

(Complete Range of Scaffolding & Formwork, System Scaffolds and Suppliers of Couplers, Props, Jacks and Fittings)

FORMWORK FABRICATION



Certified Company

The information contained in this Catalogue is, to the best of our knowledge, true and accurate at the time of publication. Users should be aware, however, that specifications are subject to change With respect to constant technical changes / improvements. The working loads contained were obtained during ideal test conditions; these may vary with mishandling and / or improper erection.



CALIFORNIA SCAFFOLDING & FORMWORK FACTORY LLC

(Complete Range of Scaffolding & Formwork, System Scaffolds and Suppliers of Couplers, Props, Jacks and Fittings)

FORMWORK FABRICATION



Certified Company

The information contained in this Catalogue is, to the best of our knowledge, true and accurate at the time of publication. Users should be aware, however, that specifications are subject to change With respect to constant technical changes / improvements. The working loads contained were obtained during ideal test conditions; these may vary with mishandling and / or improper erection.



CALIFORNIA SCAFFOLDING & FORMWORK FACTORY LLC

(Complete Range of Scaffolding & Formwork, System Scaffolds and Suppliers of Couplers, Props, Jacks and Fittings)

FACTORY GALLERY



Certified Company

The information contained in this Catalogue is, to the best of our knowledge, true and accurate at the time of publication. Users should be aware, however, that specifications are subject to change With respect to constant technical changes / improvements. The working loads contained were obtained during ideal test conditions; these may vary with mishandling and / or improper erection.



CALIFORNIA SCAFFOLDING & FORMWORK FACTORY LLC

(Complete Range of Scaffolding & Formwork, System Scaffolds and Suppliers of Couplers, Props, Jacks and Fittings)



Send your feedbacks and queries to:-

fabrication@californiascaffolding.net

commandr@emirates.net.ae



Certified Company

The information contained in this Catalogue is, to the best of our knowledge, true and accurate at the time of publication. Users should be aware, however, that specifications are subject to change With respect to constant technical changes / improvements. The working loads contained were obtained during ideal test conditions; these may vary with mishandling and / or improper erection.



CALIFORNIA SCAFFOLDING & FORMWORK FACTORY LLC

(Complete Range of Scaffolding & Formwork, System Scaffolds and Suppliers of Couplers, Props, Jacks and Fittings)

CONTACT DETAILS

Company Address:-

**CALIFORNIA SCAFFOLDING & FORMWORK FACTORY LLC
P.O. BOX: 7151, BEHIND PACIFIC BLDG. MATERIALS
KING FAISAL ROAD BETWEEN MAAZA SIGNAL AND J & P SIGNAL
SHARJAH
UNITED ARAB EMIRATES**

Phone and Fax:-

PHONE : +971 – 6 - 5431697

FAX : +971 – 6 - 5431856

E-mail:-

**fabrication@californiascaffolding.net
commandr@emirates.net.ae**

Website:-

www.californiascaffolding.net



Certified Company

The information contained in this Catalogue is, to the best of our knowledge, true and accurate at the time of publication. Users should be aware, however, that specifications are subject to change With respect to constant technical changes / improvements. The working loads contained were obtained during ideal test conditions; these may vary with mishandling and / or improper erection.